



ampac dental

DENTAL EQUIPMENT SPECIALISTS

2025 Catalogue



DCI



DMEGA



NSK Create it



DCI



NARDI
COMPRESSORI

About Us

We help members of the allied dental profession provide quality dental care with confidence.

With over 30 years of experience as an Australian owned equipment wholesaler and distributor, we are here to simplify your day to day operations so you can continue to deliver exceptional dental care. To achieve this, we:

- provide customised solutions at extremely competitive prices
- source premium dental equipment from global reputable suppliers
- offer an extensive selection of over 200 product categories
- provide same day dispatch of more than 90% of our products
- regularly exhibit at trade shows so you can preview and test the dental equipment
- provide the highest qualified, experienced technicians to service and support your equipment

Ampac Dental is the proud exclusive distributor for Swident dental chairs

Whilst functional design, style and quality are easy to see, its over time and throughout your equipment ownership experience that the superior value of Swident dental chairs becomes evident. Installation and service of the dental chairs is one of the fastest in the industry, ensuring your surgery enjoys continued operation and profitability.

How to order

Free Call 1800 061 343

Call 02 9567 3555

Email info@ampac-dental.com.au
ampacdental.com.au Contact Us



Table of Contents	Page
Dental chairs	3-7
Dental lights	7
Delivery systems	8
Components / service kits	10, 11
Dental hoses / tubing	10, 15
Compressors	12
Suction motors	14
Imaging	16
Dental stools	17
Ultrasonics / disinfectors	18
Steam sterilisers	19
Alginate mixers, curing lights	19
Handpieces	20
Showrooms	20



XF Ortho - Space Saving Chair

The new XF Ortho model is the perfect choice for orthodontic practices or surgeries with **limited space**. From the strategically placed rear arm that enhances accessibility, the small chair footprint, brilliant Faro LED lighting and the intuitive wireless foot pedal, every feature is engineered to optimise your efficiency whilst ensuring patient comfort.



Multi-function foot pedal

The units' pedal allows for seamless operation of instruments and chair adjustments reducing the risk of cross-infection. Available in wired and **wireless**.



BIOS headrest

The BIOS headrest enables effortless and precise adjustment. You can easily position and secure the headrest for optimal patient comfort and support.



Rear arm delivery system

The instrument arm positioned at the rear, glides effortlessly from left to right, providing seamless access to dental instruments.

The modular instrument delivery head with its capacity for up to 6 instrument positions adapts as your practice grows, providing a streamlined workflow.

- Triplex syringe
- EMS scaler
- HVE, SE lines
- High speed line
- Low speed motor



MADE IN ITALY





led light Maia

Ceramic spittoon

Removable and autoclavable spittoon for easy cleaning. Rotates 180° for convenient patient access.

Assistant table

- DCI or Luzzani syringes
- HVE and LVE hoses
- Touch panel for the operation of cup filler, bowl flush, treatment positions and light activation.



Patient chair

- Multi-functional foot pedal for easy control of treatment positions
- Emergency cut off switch
- Easy accessible suction filter
- Trendelenburg position
- Chrome or white armrests
- Clean water system
- Large selection of vibrant colours

"The chair ergonomics – from different positioning modes to back support to the continental delivery – have been exceptional."

Dr Bernadette Kwee,
Southern Smiles, Miranda

MADE IN ITALY

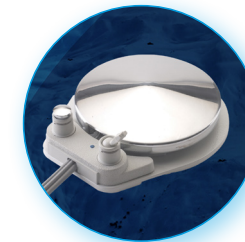


Doctor table

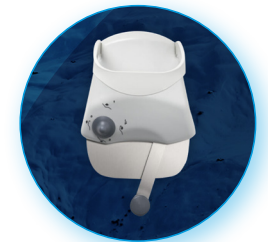
- 2 fibre optic high speed lines
- 1 electric micro motor (with electric chair)
- optional EMS, NSK or Satelec scaler
- Choose from the following:



traditional or continental



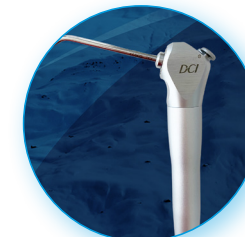
pneumatic



electric

filter

optional integrated filter



DCI



Luzzani

PARTNER with rear suction

Enjoy everything you love about the Swident Partner, now enhanced with a rear suction arm featuring a triplex syringe, HVE and LVE lines. All the benefits you need right at your fingertips!



- Faro Maia LED dental light
- 2 high speed fibre optic lines
- 1 micromotor
- Optional EMS, NSK or Satelec scaler
- Clean water system
- Removable ceramic spittoon

MADE IN ITALY

Swident Standalone chair



- Soft memory foam upholstery available in vibrant colours
- Optional Faro Maia LED light
- Effortlessly adjust chair movements and access
2 pre-programmed positions with the ergonomic foot pedal.



Knee break chair



NEW



optional cart system

- Complete symmetry for left and right handed dentists
- Automatic extendable leg section
- 2 programmable positions
- Wireless foot control
- Max height 85cm Min height 47cm
- Maximum capacity 300Kg

Options

- Ambidextrous rear suction
- Articulated arm with instrument tray
- Child booster seat
- Dental light unit or ceiling mount
- Medical grade wheels
- Cart system

Dental Lights

FARO



Ceiling Mount

Unit or wall mount

Maia

Eva

Lux	From 3.000 to 45.000 at 700 mm distance	From 11.000 to 50.000 at 700 mm distance
Lighting spot	170 x 95 mm at 700 mm distance	190 x 100 mm at 700 mm distance
Ceiling mount	optional	optional
Head rotation	2D optional 3rd axis rotation for better positioning of light beam	360° head rotation to illuminate every corner of the mouth



MADE IN ITALY

DCI Delivery systems

Suitable for orthodontic surgeries, left and right hand use or surgeries with limited space

All delivery systems include:

- DCI Precision Comfort® triplex syringe
- Individual drive air and water coolant controls
- Wet/Dry foot control
- Stainless steel tray with non skid pad
- 3 handpiece lines eg. highspeed, lowspeed, space for scaler
- Utility centre with white box



Mobile cart system #4511

- Sturdy all metal control head with smooth lines for easy cleaning
- Stainless steel tray and holder
- Deluxe clean water system
- 1/4" water QD w/flow control
- 7ft of 1/4" umbilical
- Optional fibre optic lines
- Optional EMS or NSK scaler handpiece



Mobile cart delivery #4540 with Premium vacuum

In addition to 3 handpiece lines and DCI Precision Comfort® triplex syringe, the system includes 2 HVE and 1 SE.

DCI Delivery systems

Unit or cabinet mount #4478

- Available in left or right hand configuration
- Flex arm system mounts on 2" post
- Deluxe clean water system
- 7ft of 5/8" umbilical
- Fitted to A-dec® and other equipment brands



Panel or Horizontal mounted units

- DCI Precision Comfort® triplex syringe
- Individual drive air and water coolant controls
- Economy foot control
- Control dimensions: 8 1/2" x 13/4" x 5"
- Can be mounted on top or bottom of surface
- 4 hole straight gray tubing

Horizontal mount, 3 HP



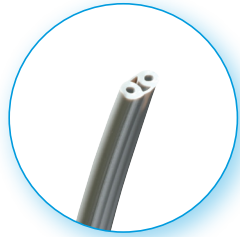
Horizontal mount automatic control for 3 handpieces #4416

Panel mount, 2 HP



Panel mount, manual control for 2 handpieces #4400

DCI Hoses



2 Hole syringe tubing #232
3 Hole syringe tubing #332

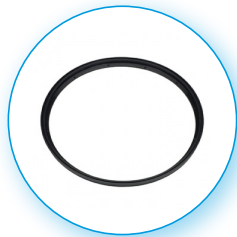


4 Hole handpiece tubing #432



Foot control tubing #426

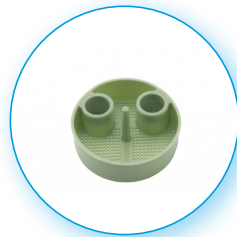
DCI Repair and Service Kits



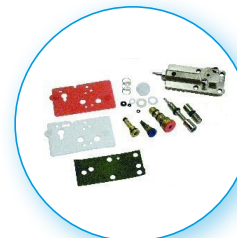
Gasket, to fit A-dec® W&H Lisa MB17 sterilizer #2186



1/4" poly Q.D panel mount with shut-off, female #0011



Solids collector disposable screen 1-7/8" diam. #5818



Service kit, to fit A-dec® Century Plus® control block #9154



Precision comfort® syringe repair kit #3635



O'ring Pk12 #2203 corresponds with A-dec® 030-006-00

DCI Dental Chair components



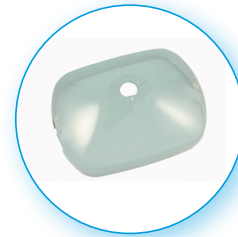
A-dec® valve #5062



Water bottle 2l #8164
1l #8669 750ml #8128



Technicians fitting kit #8781



Light shield for A-dec® halogen lights #9390



Light shield for Belmont® Clesta #8959



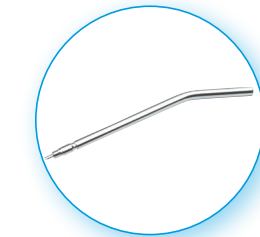
Foot control wet/dry & chip blower #6315



Kavo® LED globe #9372



Belmont Clesta® globe #8890



Syringe tip #3060 autoclavable
Syringe tip A-dec® #3055



Syringe, one button #3640
no tubing or kit, non autoclavable



Syringe, Precision Comfort #3604
non autoclavable



Syringe, autoclavable #3370
valve core, head only

These parts are manufactured by DCI to fit A-dec® equipment. DCI has no affiliation with A-dec Inc. DCI replacement parts are not manufactured under license or supervision of A-dec®



Compressors

Nardi compressors are manufactured to the highest standard to deliver quality, OIL FREE, DRY, CLEAN AIR

"The compact size of the Nardi compressor and its durability and robustness – it has never let us down."

- Dr Kanthathas, Hunter Valley Orthodontics



25l hood 67 dB



25l 73 dB



30l 62 dB; 50l 60 dB

- Oil Free, Dry, Pure Air
- Minimal maintenance
- 4 year parts warranty
- Made in Italy
- Certified by Workcover NSW
- Suitable for All climates



50l hood 67 dB



50l T 73 dB



Compressors

Oil residue can damage handpieces and fine pneumatic controls in the dental units. An oil free dental compressor is vital in protecting the health of your staff and patients. It will ultimately increase the longevity of your equipment.

Tanks are furnace painted on the inside and outside using epoxy electrostatic dust to prevent corrosion. All the compressors are certified by Workcover NSW.



50l W 73 dB

90l 73 dB

90l CAD\CAM 73 dB

tank size	dryer	cylinders	air intake l/min	output l/min @5bar	pressure Bar	power HP	decibles dB	weight Kg	dimension LxWxH cm
25 l	yes	2	350	156	8	2.00	73	44	59x43x66
25 l hood	yes	2	350	156	8	2.00	67	48	70x43x78
30 l cabinet	yes	2	350	156	8	2.00	62	79	71x44x76
50 l W	yes	2	350	156	8	2.00	73	51	84x44x68
50 l T	yes	4	480	240	8	2.50	73	60	64x45x89
50 l hood	yes	2	350	156	8	2.00	67	55	70x43x98
50 l cabinet	yes	2	350	156	8	2.00	60	96	85x50x82
90 l	yes	4	480	240	8	2.50	73	86	110x59x81
90 l cadcam	2	4	480	240*	10	2.50	73	86	110x59x81

*output @ 8bar=190 l/min

MADE IN ITALY



Robust and Reliable. Patented technology to Guarantee 100% Air and Water separation



Teravac 6000
4 Dental Units

DMEGA suction motors use a Semi-Wet System. Both suction and separation are performed within the suction motor. The result is a significant reduction in costs as there is no need to install a water separator in the dental unit.

DMEGA Teravac 6000 is the most powerful and responsive suction motor with variable speed, high airflow and amalgam retention unit that enables up to 4 operators to work simultaneously. The intelligent Mitsubishi inverter monitors the vacuum levels and adapts accordingly to provide maximum suction whether you are running 1 or 4 chairs.

The patented innovative design uses 2 cyclone impellers to guarantee 100% air and liquid separation. Furthermore, the implementation of the patented Triple Wing System and auto drain valve, releases residue from the separator thereby reducing blockages, maintenance and ultimately costly repairs.



An optional amalgam retention device, available for all motors.



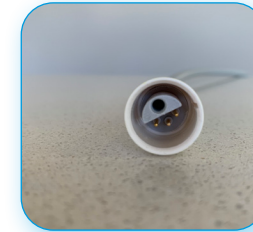
S101
1 Dental Unit

	S101	Teravac 3000	Teravac 5000	Teravac 6000
Treatment units	1 unit	2 units	3 units	4 units
Frequency	50-60 Hz	0-70 Hz	0-70 Hz	0-65 Hz
Main voltage	230 VAC	230 VAC	230 VAC	230 VAC
Max Airflow	280 l/m	600 l/m	900 l/m	1200 l/m
Max Vacuum	170-200 m bar	370 m bar	370 m bar	370 m bar
Decibels	55 dB	59 dB	61 dB	61 dB
Weight	22 kg	32 kg	33 kg	37 kg
Dimension cm WxLxH	33x54x62	41x51x61	41x51x61	41x51x63

Hoses



EMS® led EMS® no pain
EMS® for Anthos®



Satelec® scaler hose



Fibre optic, non fibre optic hose



Kavo® fibre optic hose

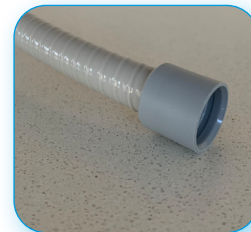


Sirona® high speed hose



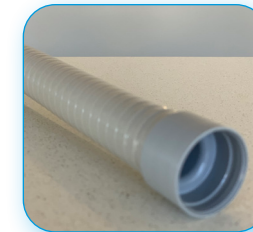
Sirona® micromotor hose

LVE



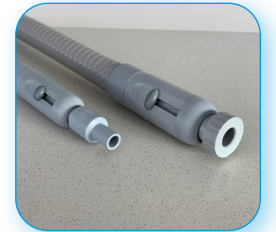
Cattani® 11mm
OEM 8mm, 10mm

HVE



Cattani® 17mm
OEM 15mm, 16mm, 20mm

Connectors



Cattani® connectors and terminals for HVE and LVE

Imaging plate scanner

Trident Reader

Capture, scan and share clear digital images with the Reader digital imaging plate scanner.

Support up to 10 workstations. TWAIN driver available. Integrates with most popular practice management systems.

Fast readout times of only 10 seconds. Plates are cleaned and ready for immediate use.

Starter pack includes imaging plate sizes 0, 1, 2, 3, covers and sleeves.



trident

Acteon PSPIX® 2

Compact space saving design fits easily into any dental surgery.

Durable imaging plates designed to withstand hundreds of uses.

Fast scanning times of only 4 seconds. Plates are erased and reused within seconds.

Intuitive design automatically detects the plate size when inserted into the slot.



acteon



Intraoral X-ray

Trident Rix70 DC

State-of-the-art technology, superior performance and reliable service.

Leading edge 0.4mm focal spot technology delivers outstanding image quality.

Adjustable tube voltage of 60-70 kV combined with steady current of 7mA allows the operator to select various settings.

Sturdy wall mounted xray arm is available in lengths of 60cm, 80cm and 100cm.



MADE IN ITALY

Acteon X-MIND® unity

Large LCD display with preset anatomical programs, device information, loading factors, dose and more.

Sharp and contrasted images, thanks to the 0.4mm focal spot size and the complete range of radiological settings.

Arm lengths: 40cm, 80cm, 110cm. Cone lengths: short 20cm for comfort, long 31cm for outstanding quality, long/short square cone 44x35cm for 50% reduction in dosage.



MADE IN FRANCE

OPG

Trident Panoramico 2D

An evolutionary machine with a compact streamlined design that fits easily into your practice.

Achieve outstanding image quality when producing adult / child panoramic, bitewing, sectoral panoramic and reduced radiation panoramic, TMJ and paranasal sinuses.

Achieve accurate patient positioning, thus reducing the need for further examinations and unnecessary radiation. This is achieved using the biting block, mirror and temple stabilisers for head support, Frankfort plane and Medium Vertical laser positioning lights. The results are clear, extremely well defined, quality images.



trident

MADE IN ITALY

Acteon OPG X-MIND® prime

With X-MIND® prime you can rely on high quality images and powerful imaging tools, to succeed in diagnosis and treatment planning.

Delivered completely assembled at your practice, X-MIND® prime requires less than 1 hour to setup.

Smart lightweight wall mounted solution, unprecedented for this range of products, X-MIND® prime ensures maximum accessibility for both standing or sitting patients.

Automatic FOV centering, LED light chin rest recognition to treatment.



acteon

MADE IN FRANCE

Doctor stool



Synchro T5

Assistant stool



Assist Plus

Bambach Stool



Bambach with back



Doctor C

ade
australian dental engineering



Assistant B



Bambach with Swing arm



Bambach stool

Ultrasonic Cleaners

Warranty 2½ years circuit board, 5 years transducers, 10 years tank

L&R SweepZone AgION

- **Antimicrobial-coated housing** provides a continuous shield from bacteria, mould and fungi to keep your equipment clean and safe.
- **SweepZone technology** sweeps through the entire tank resulting in a total clean of all instruments irrespective of their position in the tank. Eliminates hot spots and weak areas!
- **Digital touch pad** allows easy control of the functions.
- **Stainless steel housing** resists corrosion, rust and fingerprints for lasting durability.
- **4L** LxWxH 32.2 x 17.5 x 22.2; 67dB
12.3L 41.9 x 25.4 x 30.5; 67dB



4L SweepZone



Recessed model

Benchtop model

Flush lid design provides a clean streamline benchtop area.

Recessed cover collects condensation.

Recessed model sizes: 12.3L, 13.6L, 24.6L

Washer-disinfector

Warranty 2 years

Clean, disinfect and dry your instruments with MELAtherm 10 to enable reliable instrument decontamination.

Active drying ensures instruments are processed and ready to use in 60 minutes.

Smart storage design integrates your process agents and metering module within the unit.

80 baskets and accessories to customise your perfect practice setup.



MELAtherm 10

Steam Steriliser

Warranty 2 years or 2500 cycles

Plumbed steriliser 22L B Class

20 minute Quick program B cycle for a maximum of 1.5kg wrapped or 7kg unwrapped instruments.

30 minute Universal program up to 7kg including drying.

Start time preselection allows you to preselect and run a program at a later determined time.

Water treatment Meladem 40 ion exchanger unit automatically fills the steriliser with demineralised water and disposes unused water.

Increased chamber size lets you select up to 8 trays and various configurations to suit your individual requirements.



Vacuklav 44 B+



Label printer

Alginate mixing machine

M GX-300



Work with perfectly mixed, bubble-free alginate every time. Brilliant durable little benchtop machine. Designed for use with any alginate or stone, this robust simple device mixes three scoops in just 11 seconds with no dust or waste. Never hand mix again.



"I bought 2 of these machines for my practice.. I was so impressed I now own 14!"

- Dr Jo Geenty
Smileteam Orthodontics

Cordless LED curing light

BlueLEX LD-M4

- Full power mode reaches 1000 mW/cm².
- Charge with micro usb, Wavelength 420-490nm
- Long battery life



Capsule Mixer

a.max AM-1

- Stable, quiet and vibration free
- Powerful speed ensures consistent and homogenous mixing results
- 2 memory settings, adjustable timer 1-30 sec.
- Compatible with all amalgam, glass ionomer, cements on the market.





Mini air micro motors
S-Max M205



Mini electric micro motors
NLX PLUS/MULTIPAD



Electric micromotor system
NLZ E



Couplings
PTL-CL-LED



Contra angle handpieces
Ti-Max Z95L SWITCH



High speed handpieces
S-Max M900L



Oral hygiene
Varios 170



Maintenance
iCare C2



Ask us about
Handpiece Repairs

Showrooms

Sydney Suites 5&6, 39-45 George St Rockdale NSW 2216

Melbourne 4/130-132 Bayfield Rd East, Bayswater North VIC 3153

Perth 10/96 Briggs Street Welshpool WA 6106



ampac dental
DENTAL EQUIPMENT SPECIALISTS

30 YEARS

Free Call 1800 061 343 • T 02 9567 3555 • F 02 9599 2153
Suites 5&6, 39-45 George St, PO Box 554, Rockdale NSW 2216
www.ampacdental.com.au • info@ampac-dental.com.au