

44W of unprecedented power.

NEW Ti-Max Z Series Air Turbine Handpieces

Z990L/Z890L

Experience like never before, the unprecedented power of the industry's best-in-class 44W air turbine handpiece as it delivers powerful cutting strength.

It makes zirconia removal easy, reducing chairside time and minimising patient discomfort.



DYNAMIC POWER SYSTEM

The "DYNAMIC POWER SYSTEM" has been developed using the latest fluid simulation software. This enables efficient conversion of air into power to achieve a significant increase in power from 26W to 44W*. Makes zirconia removal easy, reducing chairside time and minimising patient discomfort.

*Z990L, Air pressure at 0.42 MPa.



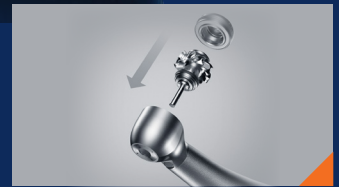
DURAPOWER CHUCK

NSK's proprietary technology enhances the chuck function. The wedge-shaped part grips the burr firmly with force generated by the wedge effect.



Quick Stop Function

The Quick Stop Function stops high speed rotation in around 1 second. It improves safety in the oral cavity by halting drill spin. The result is efficient, high speed cutting and incredibly safe surgeries.



Easily replaceable cartridge

The cartridge can be easily replaced by the user, eliminating time lost from sending the handpiece in for repair and ensuring a consistently good treatment environment.



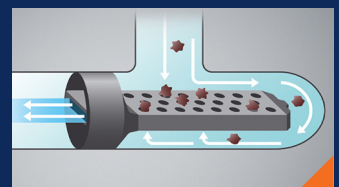
100° angled head

Considering the physiological curves of the oral cavity (Curve of Spee and Curve of Wilson), the 100° angled head enables easier access and high-torque cutting for efficient treatment in the oral cavity.



DURAGRIP coating

The surface of the pure titanium body is blasted to eliminate shiny surfaces by producing micro surface unevenness, and then coated in our original "DURAGRIP" coating. As well as improved scratch resistance and durability, the uneven surface ensures a comfortable, non-slip grip.



Microfilter

Equipped with built-in water filter. The 0.3 mm diameter mesh water filter prevents foreign matter from entering the water line, reducing problems of clogging.

New Ti-Max Z2 Series Handpieces

Z990L



Optic	Model	Order Code	RRP
✓	Z990L	PA23730001	\$1,981

Features:

- Head: Standard head
- Power: 44 W*
- Rotation: 280,000-360,000 min-1
- Head size: \varnothing 12.1 x H 12.7 mm
- Water spray: Quattro spray
- Body material: Titanium
- Body coating: DURAGRIP

*Z990L, Air pressure at 0.42 MPa.

BUY 2 Ti-Max Z990L and **GET 1 FREE**

Z890L



Optic	Model	Order Code	RRP
✓	Z890L	PA23720001	\$1,981

Features:

- Head: Miniature head
- Power: 41 W
- Rotation: 320,000-400,000 min-1
- Head size: \varnothing 10.6 x H 10.8 mm
- Water spray: Quattro spray
- Body material: Titanium
- Body coating: DURAGRIP

BUY 2 Ti-Max Z890L and **GET 1 FREE**

Connections available for KaVo®, W&H®, Morita, Sirona® and Bien-Air®, priced \$2,074.

45° Handpieces

X450L



Model	Order Code	RRP	20% OFF
X450L	P1078	\$1,677	\$1,342

Z45L



Model	Order Code	RRP	20% OFF
Z45L	C1064	\$2,263	\$1,810

Z-SG45L



Model	Order Code	RRP	20% OFF
Z-SG45L	C1107	\$2,221	\$1,777

20% OFF 45° Handpieces

Features:

- Head: 45° angle head
- Power: 21 W
- Rotation: 380,000-450,000 min-1
- Rear-exhaust air
- Water spray: Triple water jet

Features:

- Head: 45° angle head
- Gear ratio: 1:4.2 increasing
- For: FG Burs (\varnothing 1.6)
- Water Switch Function (Water jet/Mist)
- Quattro spray

Features:

- Head: 45° angle head
- Gear ratio: 1:3 increasing
- For: FG Burs (\varnothing 1.6)
- Max speed: 120,000 min-1
- Water spray: Triple spray/External cooling

New **ENDO-MATE DT2**

ENDO-MATE DT2

Model	Order Code	RRP
ENDO-MATE DT2	Y1004230	\$2,348



The NEW ENDO-MATE DT2 has been developed for use with most major brands of Ni-Ti files. The endodontic motor has a wide range of torque settings, allowing it to be used with Ni-Fi Files from virtually all major manufacturers.

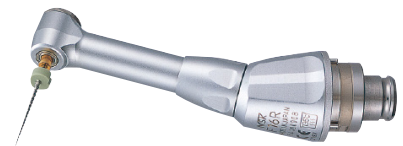
Features:

- Compatible with all major brands of Ni-Ti files
- Torque control, with an auto-reverse function
- Compact desktop unit
- 2-way power source
- Lightweight, smart and ergonomic handpiece
- Large screen size for immediate visibility
- Convenient 2-way On/Off switch

FREE MP-F16R WITH **PURCHASE OF ENDO-MATE DT2**

MP-F16R

Model	Order Code	RRP	Promo
MP-F16R	Y110096	\$763	FREE with ENDO-MATE DT2



New **NLZ Electric Micromotor with Endodontic Function**

NLZ Electric Micromotor with Endodontic Function

Model	Order Code	RRP	15% OFF
NLZ-E	Y1500361	\$5,942	\$5,051



The NLZ-E can help any user of air driven handpieces convert to electric. The NLZ-E caters to a wide-range of restorative & endodontic treatments including rotational and reciprocating endo functions.

Features:

- Electric clinical micromotor
- High speed rotation and torque
- Flexible speed variation
- Contra-Check Function
- General, rotary endo & reciprocating endo functions
- ISO Type E easy to connect with all handpieces and contra-angles
- Internal water spray

15% OFF + FREE NLZ ENDO HANDPIECE WITH **PURCHASE OF NLZ-E**

NLZ Endo 6:1 Endo Handpiece for Rotary and Reciprocating treatments

Model	Order Code	RRP	Promo
NLZ Endo	C1130	\$893	FREE with NLZ-E



Surgic Pro2



Surgic Pro2 Optic Complete Set with X-SG20L Optic Handpiece

Optic	Model	Order Code	RRP
✓	Surgic Pro2 OPT	Y1500511	\$8,726

Features:

- Control unit
- SGL80M Optic micromotor
- X-SG20L Optic handpiece (20:1 reduction)
- Foot control wireless
- Irrigation tube (pack of 3)
- Other accessories

Control unit with AHC:

- Power supply: AC100-240V 50/60 Hz
- Max. pump output: 75 mL/min
- Programs: 8 programs/Implant systems
- Dimensions: W 245 x D 235 x H 90 mm

Micromotor:

- Torque: 5-80 Ncm
- Motor speed: 200-40,000 min⁻¹
- Light power: Over 32,000 LUX (Optic Micromotor)

Foot control wireless:

- Foot control functions: Coolant Solution Flow Volume Button, PRG (Program) Button, Forward/Reverse Button, Speed Control Pedal

Surgic Pro2 Non-optic Complete Set with SG20 Non-optic Handpiece

Optic	Model	Order Code	RRP
✗	Surgic Pro2 NON-OPT	Y1500512	\$7,479

Features:

- Control unit
- SG80M Non-Optic micromotor
- X-SG20 handpiece (20:1 reduction)
- Foot control wireless
- Irrigation tube (pack of 3)
- Other accessories

Control unit with AHC:

- Power supply: AC100-240V 50/60 Hz
- Max. pump output: 75 mL/min
- Programs: 8 programs/Implant systems
- Dimensions: W 245 x D 235 x H 90 mm

Micromotor:

- Torque: 5-80 Ncm
- Motor speed: 200-40,000 min⁻¹

Foot control wireless:

- Foot control functions: Coolant Solution Flow Volume Button, PRG (Program) Button, Forward/Reverse Button, Speed Control Pedal

FREE OSSEO 100+ WITH PURCHASE OF SURGIC PRO2

Osseo 100+

Osseo 100+ Wireless Connectivity



Optic	Model	Order Code	RRP
X	Osseo 100+	Y1004176	\$3,806

Features:

- Instrument weight: 100 g
- Battery full charge time: approx. 3 hours*
- Battery continuous drive time: approx. 1 hour*
- MultiTipeg driver
- Mains adapter and plugs

*Varies depending on usage situations. MultiTipeg™ is not included, sold separately.

Connectivity with Surgic Pro2
The ISQ value is transferred automatically when connected with Surgic Pro2. The Bluetooth® connection means that clinical procedures will be undisturbed.

Wireless data management
The measured ISQ can be shared and processed with data on external terminals via Surgic Pro2.

FREE WITH PURCHASE OF SURGIC PRO2 COMPLETE SET

iSD900

Cordless Prosthodontic Screwdriver



Model	Order Code	RRP	20% OFF
iSD900	Y1001358	\$3,604	\$2,883

iSD900 cordless screwdriver with Torque Calibration System (TCS) for prosthodontic screw fixing procedures.

Features:

- Torque Calibration System (TCS)
- Torque range: 10-40 Ncm
- LCD panel
- Rotational speed
- High visibility
- On/Off switch lever

20% OFF iSD900

VarioSurg 3

VARIOSURG 3 ULTRASONIC BONE SURGERY SYSTEM



Optic	Model	Order Code	RRP	20% OFF
✓	VarioSurg 3	Y1002726	\$12,468	\$9,975

Features:

- Control unit
- LED handpiece with 2m cord
- FC-78 foot control
- Sterilisation cassette
- Handpiece stand
- Irrigation tube (5 pieces)
- Other accessories

20% OFF VARIOSURG 3

VSG3 TIP HOLDER



Model	Order Code	RRP
VSG3 Tip Holder	20001327	\$332

VARIOSURG TIPS



Model	Order Code	RRP
VarioSurg Tips	Varies	From \$386

FREE WITH **PURCHASE OF 4 TIPS**

BUY 4 GET A **FREE VSG3 TIP HOLDER**

SCAN FOR
FULL NSK
VARIOSURG
TIP RANGE



Varios Combi Pro

VARIOS COMBI PRO BUNDLE PACKAGE



Model	Order Code	RRP
Varios Combi Pro Bundle Package	VCPBUNDLEPKG	\$12,751

Bundle package includes:

- Varios Combi Pro Unit
- PROPHY-CHAMBER for supragingival air polishing
- x3 Prophy handpieces with 60° nozzle for supragingival cleaning
- x4 300g bottles of FLASH pearl supragingival cleaning powder
- PERIO-CHAMBER for subgingival air polishing
- x2 Perio handpieces
- x2 boxes (40 pieces) sterile disposable nozzle tips
- x2 160g bottles of Perio-Mate Powder
- x2 Optic scaler handpieces
- x3 Scaling tips (G4, G6, G8) & Sterilization case

FREE iCartV

iCartV DUO FOR VCP WITH WATER BOTTLE SET



Model	Order Code	RRP	Promo
iCartV	S9090V	\$2,536	FREE with Varios Combi Pro Bundle


Varios Ultrasonic Scaler Tips

Buy any 2 NSK Varios Ultrasonic Scaler Tips and get the 3rd FREE.*

*Free tip must be of equal or lesser value. Tips priced from \$139.



SCAN FOR FULL NSK ULTRASONIC TIP RANGE



BUY 2 TIPS AND GET 1 ADDITIONAL TIP FREE

▲ ULTIMATE XL



Model	Order Code	RRP	20% OFF
UMXL-GC	Y141469	\$2,932	\$2,346

Features:

- Dimensions: W 167 x D 247 x H 77 mm
- Weight: 2.8 kg
- Speed: 1,000-50,000 min-1
- Power supply: AC 230V 50/60 Hz
- Max. torque: 6.0 Ncm (Compact)
- 180° vector motor control
- Low noise and low vibration
- Compact and lightweight
- Easy-to-hold handpiece
- Digital speed display

20% OFF ULTIMATE XL

▲ iClave plus



Model	Order Code	RRP	15% OFF
iClave plus	Y1003077	\$10,692	\$9,088

Features:

- Dimensions: W 445 x D 532 x H 428 mm
- Weight: 55 kg maximum
- Chamber dimensions: ø240 x 384 mm
- Chamber capacity: 18 Litre
- Power consumption: 1,900 W
- Supply voltage: CE 230 V 50 Hz
- Air Expulsion System: Vacuum pump 1, 3, 4 vacuum
- Max load solid: 4 kg
- Max load porous: 1.5 kg

15% OFF iCLAVE PLUS + ACCESSORIES

▲ VOLVERE i7



Model	Order Code	RRP	20% OFF
VOLVERE i7 RM	Y1003493	\$2,115	\$1,692

Features:

- Dimensions: W 69 x D 185 x H 167 mm
- Weight: 930 g standard type motor handpiece
- Speed: 1,000-35,000 min-1
- Power supply: AC 230V 50/60 Hz

20% OFF VOLVERE i7

\$20,000
Tax Asset
Write off

Take advantage
and claim full tax
depreciation instantly for
items purchased before
30th June 2024

All prices as listed. Valid until 30 June 2024. Not to be used in conjunction with any other NSK promotions. All prices are as quoted in AUD and include GST.