



# ampac dental

DENTAL EQUIPMENT SPECIALISTS

2024 Catalogue



**swident**  
WE SUPPORT YOUR PRACTICE



**DCI**



**DMEGA**



**NSK Create it**



**trident**



**NARDI  
COMPRESSORI**



led light Maia

**Ceramic spittoon**

removable and autoclavable spittoon for easy cleaning. Rotates 180° for convenient patient access.

**Assistant table**

- Luzzani or DCI triplex syringe
- HVE and LVE hoses
- Touch panel for the operation of cup filler, bowl flush, treatment positions and light activation.



**Patient chair**

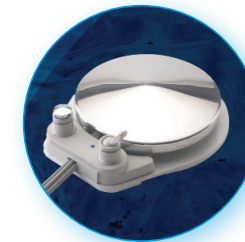
- Multi-functional foot pedal for easy control of treatment positions
- Emergency cut off switch
- Easy accessible suction filter
- Trendelenburg position
- Chrome or white armrests
- Large selection of vibrant colours
- Clean water system

**Doctor table**

- 2 fibre optic high speed lines
- 1 electric micro motor (with electric chair)
- optional scaler
- choose from the following:



traditional or continental



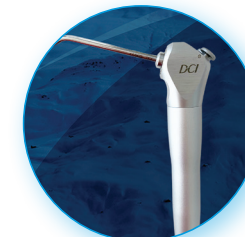
pneumatic or



electric

**filter**

optional integrated filter



DCI or



Luzzani

*"The Swident chairs have been absolutely incredible"*

- Dr Kanowitz,  
Principal Dental Surgeon, Hornsby

MADE IN ITALY



## Available with rear suction and handpieces

- Enjoy all the benefits of the Swident Partner chair, now with a rear suction arm, fitted with a triplex syringe, HVE and LVE lines.
- The pneumatic dental chair includes Faro Maia LED dental light, pneumatic foot pedal, 2 high speed fibre optic lines, 1 low speed line and optional EMS or NSK scaler.
- Soft memory foam upholstery in various vibrant colours.
- Choose from continental or traditional delivery style.
- The continental, over the patient, delivery table combined with the rear suction arm enhances efficiency and ease of use for both left and right handed operators.
- Faro LED Maia light delivers a completely uniform lighting spot of 170 x 95mm.



Rear suction available with HVE, LVE, triplex and handpieces

MADE IN ITALY



## Knee break dental chair - Linda Next

**Linda Next** knee break chair provides ease of use and outstanding comfort for both the patient and doctor.

- Extremely easy to use thanks to the joystick foot control and built in programs for patient positioning, rinse position, last position, Trendelenberg and zero positions
- 3 operator profiles with 3 programmable positions
- Minimum height 500mm and maximum height of 875mm allows for standing procedures
- Synchronised chair movements allow smooth operation of the backrest and footrest. Slow mode feature option allows for precise patient positioning
- Articulated headrest provides comfort and accommodates different procedures
- Emergency safety switch and patient lifting capacity of 300Kg



### Options:

- Rotating base; wheels
- Swiveling left and right armrests
- Soft upholstery, child booster seat
- Various headrests
- Backrest motorised height adjustment



Optional child booster seat

MADE IN ITALY





### Cart system



- Luzzani or DCI triplex syringe
- 1 highspeed fibre optic line
- 1 low speed line
- 1 additional space
- optional EMS or NSK scaler
- optional clean water system

*"The Friend Easy compliments our practice very well. They are user friendly and perform reliably. There are good reasons why we bought six chairs over 7 years."*

- Dr Kanthathas, Orthobay, NSW

MADE IN ITALY



### Ceiling mount



### Unit or Wall mount



MAIA



EVA

**Lux** from 3.000 to 45.000 at 700 mm distance.

**Lighting spot** 170 x 95 mm at 700 mm distance.

**2D head rotation** for perfect balance. **Optional 3rd axis rotation** for better positioning of light beam

**Lux** from 11.000 to 50.000 at 700 mm distance.

**Lighting spot** 190 x 100 mm at 700 mm distance.

**3D head rotation**  
**4 colour temperatures:**  
5700K for high concentration  
5000K for orthodontics  
4000K ideal for surgery  
2700K ideal for curing

MADE IN ITALY



### Doctor and assistant stools



# DCI Delivery systems

Suitable for orthodontic surgeries, left and right hand use or surgeries with limited space

All delivery systems include:

- DCI Precision Comfort® triplex syringe
- Individual drive air and water coolant controls
- Wet/Dry foot control
- Stainless steel tray with non skid pad
- 3 handpiece lines eg. highspeed, lowspeed, space for scaler
- Utility centre with white box



## Mobile cart system #4511

- Sturdy all metal control head with smooth lines for easy cleaning
- Stainless steel tray and holder
- Deluxe clean water system
- 1/4" water QD w/flow control
- 7ft of 1/4" umbilical
- Optional fibre optic lines
- Optional EMS or NSK scaler handpiece



## Mobile cart delivery #4540 with Premium vacuum

In addition to 3 handpiece lines and DCI Precision Comfort® triplex syringe, the system includes 2 HVE and 1 SE.

# DCI Delivery systems

## Unit or cabinet mount #4478

- Available in left or right hand configuration
- Flex arm system mounts on 2" post
- Deluxe clean water system
- 7ft of 5/8" umbilical
- Fitted to A-dec® and other equipment brands



## Panel or Horizontal mounted units

- DCI Precision Comfort® triplex syringe
- Individual drive air and water coolant controls
- Economy foot control
- Control dimensions: 8 1/2" x 13/4" x 5"
- Can be mounted on top or bottom of surface
- 4 hole straight gray tubing

## Horizontal mount, 3 HP



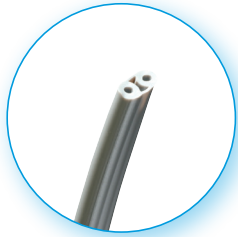
Horizontal mount automatic control for 3 handpieces #4416

## Panel mount, 2 HP



Panel mount, manual control for 2 handpieces #4400

# DCI Hoses



2 Hole syringe tubing #232  
3 Hole syringe tubing #332

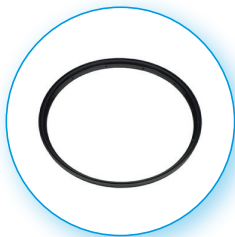


4 Hole handpiece tubing #432



Foot control tubing #426

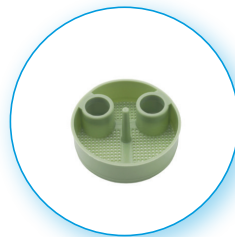
# DCI Repair and Service Kits



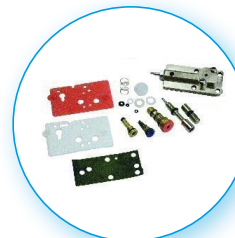
Gasket, to fit A-dec® W&H  
Lisa MB17 sterilizer #2186



1/4" poly Q.D panel mount  
with shut-off, female #0011



Solids collector disposable  
screen 1-7/8" diam. #5818



Service kit, to fit A-dec® Century  
Plus® control block #9154



Precision comfort® syringe  
repair kit #3635



O-ring Pk12 #2203  
corresponds with  
A-dec® 030-006-00

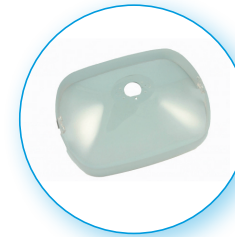
# DCI Dental Chair components



A-dec® valve #5062



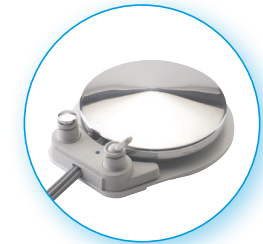
Water bottle 2l #8164  
1l #8669 750ml #8128



Light shield for A-dec®  
halogen lights #9390



Light shield for Belmont®  
Clesta #8959



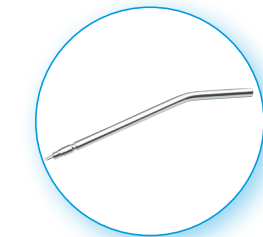
Foot control wet/dry  
& chip blower #6315



Kavo® LED globe #9372



Belmont Clesta® globe #8890



Syringe tip #3060 autoclavable  
Syringe tip A-dec® #3055



Syringe, one button #3640  
no tubing or kit, non autoclavable



Syringe, Precision Comfort #3604  
non autoclavable



Syringe, autoclavable #3370  
valve core, head only

These parts are manufactured by DCI to fit A-dec® equipment. DCI has no affiliation with A-dec Inc. DCI replacement parts are not manufactured under license or supervision of A-dec®



# Compressors

Nardi compressors are manufactured to the highest standard to deliver quality, OIL FREE, DRY, CLEAN AIR



25l hood 67 dB



25l 73 dB



30l 64 dB; 50l 62 dB

- Oil Free, Dry, Pure Air
- Minimal maintenance
- 4 year parts warranty
- Made in Italy
- Certified by Workcover NSW
- Suitable for All climates



50l hood 67 dB



50l T 73 dB



# Compressors

Oil residue can damage handpieces and fine pneumatic controls in the dental units. An oil free dental compressor is vital in protecting the health of your staff and patients. It will ultimately increase the longevity of your equipment.

Tanks are furnace painted on the inside and outside using epoxy electrostatic dust to prevent corrosion. All the compressors are certified by Workcover NSW.



50l W 73 dB



90l 73 dB



90l CAD\CAM 73 dB

tank size	dryer	cylinders	air intake l/min	output l/min @5bar	pressure Bar	power HP	decibles dB	weight Kg	dimension LxWxH cm
25 l	yes	2	350	156	8	2.00	73	44	59x43x66
25 l hood	yes	2	350	156	8	2.00	67	48	70x43x78
30 l cabinet	yes	2	350	156	8	2.00	64	79	71x44x76
50 l W	yes	2	350	156	8	2.00	73	51	84x44x68
50 l T	yes	4	480	240	8	2.50	73	60	64x45x89
50 l hood	yes	2	350	156	8	2.00	67	55	70x43x98
50 l cabinet	yes	2	350	156	8	2.00	62	96	85x50x82
90 l	yes	4	480	240	8	2.50	73	86	110x59x81
90 l cadcam	2	4	480	240*	10	2.50	73	86	110x59x81

\*output @ 8bar=190 l/min

MADE IN ITALY





# Ultrasonic Cleaners

Warranty 2½ years circuit board, 5 years transducers, 10 years tank



## L&R SweepZone AglON

- **Antimicrobial-coated housing** provides a continuous shield from bacteria, mould and fungi to keep your equipment clean and safe.
- **SweepZone technology** sweeps through the entire tank resulting in a total clean of all instruments irrespective of their position in the tank. Eliminates hot spots and weak areas!
- **Digital touch pad** allows easy control of the functions.
- **Stainless steel housing and lid** means it is corrosion, rust and fingerprint resistant.
- **4L** LxWxH 32.2 x 17.5 x 22.2; 67dB  
**12.3L** 41.9 x 25.4 x 30.5; 67dB



4L SweepZone



Recessed model

## Benchtop model

- Flush lid design provides a clean streamline benchtop area.
- Recessed cover collects condensation.
- Recessed model sizes: 12.3L, 13.6L, 24.6L

# Washer-disinfector

Warranty 2 years

- **Clean, disinfect and dry** your instruments with **Melatherm 10** to enable reliable instrument decontamination.
- **Active drying** ensures instruments are processed and ready to use in 60 minutes.
- **Clever storage space** keeps your process agents and metering module integrated in the unit.
- **80 baskets and accessories** available to select the ideal setup for your practice.



MELatherm 10



# Steam Steriliser

Warranty 2 years or 2500 cycles



The Melag brand is synonymous with quality, economy, speed and above all unparalleled sterilisation treatment for your dental instruments. Proudly made in Germany, Melag steam sterilisers are manufactured and tested under the strictest conditions to ensure complete customer satisfaction.

**Evolution B Class** autoclave incorporates revolutionary patented technologies to deliver faster, secure and more efficient processing of your instruments.

Double Jacket technology ensures air is rapidly removed from all load types (solid, hollow, wrapped and unwrapped) in the sterilisation chamber. The result is fast and efficient processing times.

Innovative and patented **DRYtelligence** reduces drying times by 80%. A special sensor automatically adapts to the drying load. A smaller load requires less drying time therefore limiting the exposure of the instruments to unnecessary heat and damage.

World's largest colour touch display is now even bigger. The intuitive menu structure enables program and cycle selection. Sterilisation run, log and other information is displayed in a clear, easy to read fashion.

## Plumbed steriliser 22L B Class

- **20 minute Quick program B cycle** for a maximum of 1.5kg wrapped or 7kg unwrapped instruments.
- **30 minute Universal program** up to 7kg including drying.
- **Start time preselection** allows you to preselect and run a program at a later determined time.
- **Water treatment Meladem 40** ion exchanger unit automatically fills the steriliser with demineralised water and disposes of unused water.



Melag 44B+



Thanks to the increased chamber size you can select up to 8 trays and various configurations to suit your individual requirements.



To label and trace instruments after the successful sterilisation process, use **MELaprint 60**.



## Intra-oral X RAY

State-of-the-art technology, superior performance and reliable service makes the Trident intra-oral xray **RiX-70 DC** the clear choice.

Leading edge .04mm focal spot technology delivers outstanding image quality. Whether your using film or digital applications, your images are sharper with incredible detail and superior contrast. The result is improved diagnostics and enhanced patient care.

The main control panel has easy to read icons offering numerous preset exposure settings for patient size (child, small adult, large adult), tooth structures, film type (plates, sensor or film). An additional keypad is installed near the tube head to manually adjust the exposure time and tooth type.

Adjustable tube voltage of 60-70 kV combined with steady current of 7mA allows the operator to select various settings to produce detailed images for improved sharpness and contrast.

With a strong, robust design, the wall mounted xray arm is available in lengths of 100cm, 80cm and 60cm to suit even the most challenging of spaces.

Backed up by 2 year warranty on parts and 1 year on labour, the Rix-70 DC xray represents excellent value for money. All products are engineered and manufactured by Italian company Trident, who specialise in radiological products.



## OPG Panoramic 2D

Provide superior treatment with the **Panoramico 2D** OPG. An evolutionary machine with a compact streamlined design that fits easily into your practice.

Achieve outstanding image quality when producing any of the following programs:

- Adult and child panoramic
- Bitewing
- Sectoral panoramic and reduced radiation panoramic
- Orthopantomogram
- TMJ
- Paranasal sinuses



OPG Panoramico 2D

## Phosphor Plate system

Capture, scan and share clear digital images with the **Reader** Digital Phosphor Plate system.

Fast readout time 10 seconds. Plates are cleaned and ready for immediate use.

Support up to 10 workstations. TWAIN driver available. Integrates with most popular practice management software.

Starter pack includes phosphor plate sizes 0,1,2,3, covers and sleeves.



Reader

## Alginate mixing machine

M GX-300



Work with perfectly mixed, bubble-free alginate every time. Brilliant durable little benchtop machine. Designed for use with any alginate or stone, this robust simple device mixes three scoops in just 11 seconds with no dust or waste. Never hand mix again.



*"I bought 2 of these machines for my practice.. I was so impressed I now own 14!"*

- Dr Joseph Geenty  
Wollongong Orthodontist

## Cordless LED curing light

BlueLEX LD-M4

- Full power mode reaches 1000 mW/cm<sup>2</sup>
- Charge with micro usb, Wavelength 420-490nm
- Long battery life



## Capsule Mixer

a.max AM-1

- Stable, quiet and vibration free
- Powerful speed ensures consistent and homogenous mixing results
- 2 memory settings, adjustable timer 1-30 sec.
- Compatible with all amalgam, glass ionomer, cements on the market.



Robust and Reliable. Patented technology to Guarantee 100% Air and Water separation



Teravac 6000  
4 Dental Units

**DMEGA** suction motors use a Semi-Wet System. Both suction and separation are performed within the suction motor. The result is a significant reduction in costs as there is no need to install a water separator in the dental unit.

**DMEGA Teravac 6000** is the most powerful and responsive suction motor with variable speed, high airflow and amalgam retention unit that enables up to 4 operators to work simultaneously. The intelligent Mitsubishi inverter monitors the vacuum levels and adapts accordingly to provide maximum suction whether you are running 1 or 4 chairs.

The patented innovative design uses 2 cyclone impellers to guarantee 100% air and liquid separation. Furthermore, the implementation of the patented Triple Wing System and auto drain valve, releases residue from the separator thereby reducing blockages, maintenance and ultimately costly repairs.



An optional amalgam retention device, available for all motors.



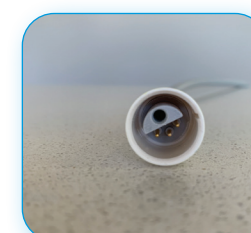
S101  
1 Dental Unit

	S101	Teravac 3000	Teravac 5000	Teravac 6000
Treatment units	1 unit	2 units	3 units	4 units
Frequency	50-60 Hz	0-70 Hz	0-70 Hz	0-65 Hz
Main voltage	230 VAC	230 VAC	230 VAC	230 VAC
Max Airflow	280 l/m	600 l/m	900 l/m	1200 l/m
Max Vacuum	170-200 m bar	370 m bar	370 m bar	370 m bar
Decibels	55 dB	59 dB	61 dB	61 dB
Weight	22 kg	32 kg	33 kg	37 kg
Dimension cm WxLxH	33x54x62	41x51x61	41x51x61	41x51x63

## Hoses



EMS® EMS® no pain  
EMS® for Anthos®



Satelec® scaler hose



Fibre optic, non fibre optic hose



Kavo® fibre optic hose

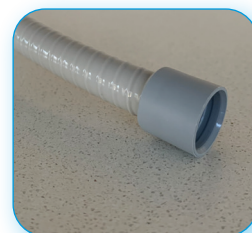


Sirona® high speed hose



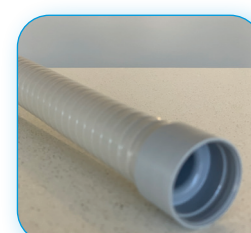
Sirona® micromotor hose

## LVE



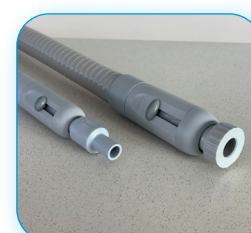
Cattani® 11mm  
OEM 8mm, 10mm

## HVE



Cattani® 17mm  
OEM 15mm, 16mm, 20mm

## Connectors



Cattani® connectors and terminals for HVE and LVE



Mini air micro motors  
S-Max M205



Mini electric micro motors  
NLX PLUS/MULTIPAD



Electric micromotor system  
NLZ E



Couplings  
PTL-CL-LED



Contra angle handpieces  
Ti-Max Z95L SWITCH



High speed handpieces  
S-Max M900L



Oral hygiene  
Varios 170



Maintenance  
iCare C2



Ask us about  
Handpiece Repairs

## Nationwide

Sales and Service



**ampac dental**  
DENTAL EQUIPMENT SPECIALISTS

**30** YEARS

Free Call 1800 061 343 • T 02 9567 3555 • F 02 9599 2153  
Suites 5&6, 39-45 George Street, PO Box 554, Rockdale NSW 2216  
[www.ampacdental.com.au](http://www.ampacdental.com.au) • [info@ampac-dental.com.au](mailto:info@ampac-dental.com.au)